

BOOK  
NOW

# Riviera West

T A M A R I N

## Between the Mountain and the Sea

If you are in pursuit of excellence and breathtaking views, this unique development nestled between the mountain and the sea, epitomizes elegant entertaining and gracious living, offering privacy, security and unmatched luxury.

The interior is devoted to pleasing the eye and soothing the mind with its contemporary design and fine amenities.

Artist's impression of no contractual value



- ★ 24 Three-Bedroom Apartments
- ★ Spacious Floor Plans
- ★ Air Conditioned
- ★ CCTV
- ★ Lift
- ★ Fitted Kitchen
- ★ Common Swimming Pool
- ★ Private Parking
- ★ Proximity to shopping centres, beach and other amenities

MARCOM



Real Estate for your Future

For more information, call:  
**Ireko Realty**, Montebello, Pailles on (230) 405 2200  
or email: [info@irekorealty.com](mailto:info@irekorealty.com)

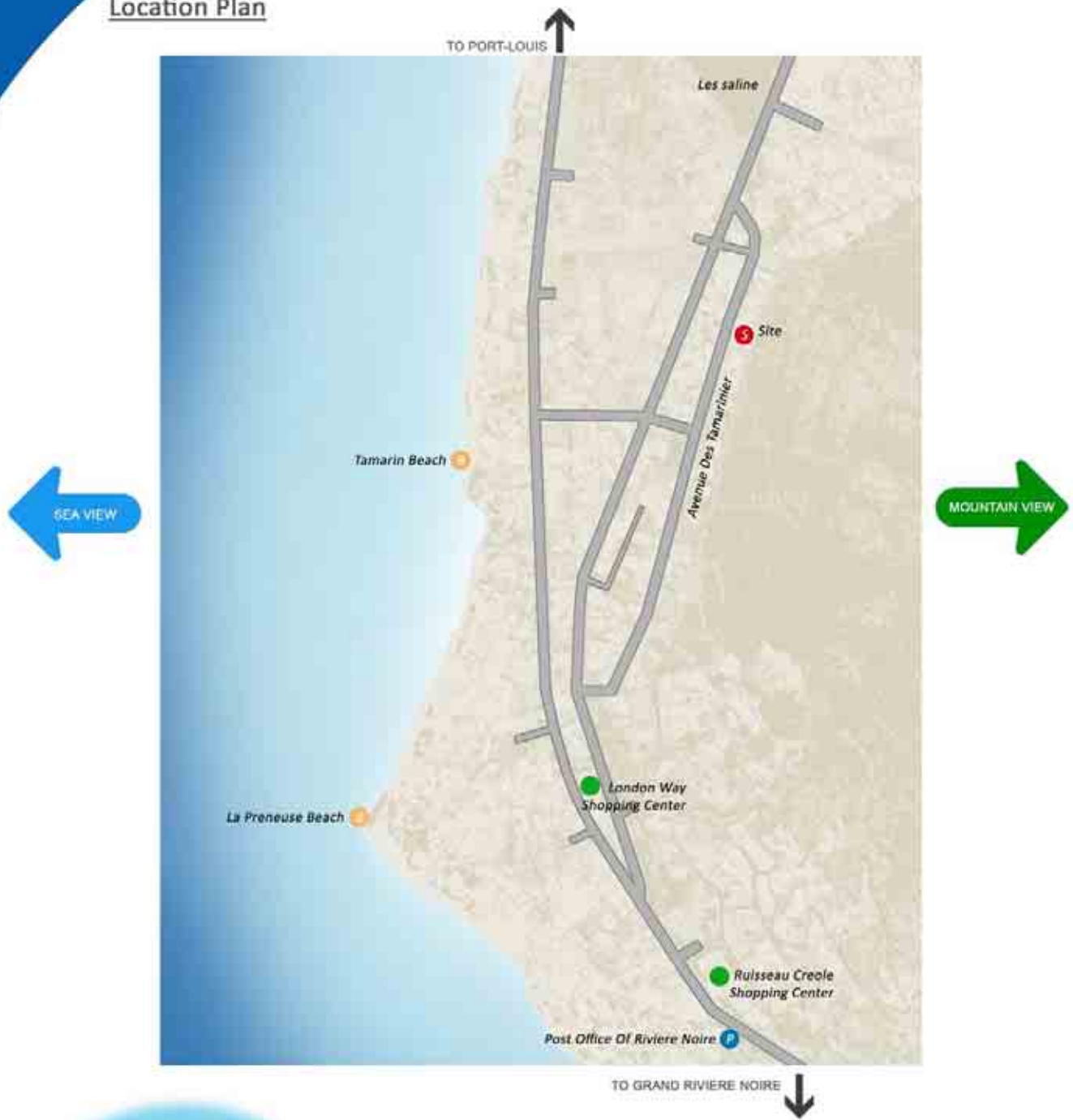
A member of the British American Investment Group of Companies

# Riviera West

T A M A R I N

Between the Mountain and the Sea

## Location Plan



Site Riviera West



Typical Site Plan



# Riviera West

T A M A R I N

Between the Mountain and the Sea

Block B

Block A



Apartment A1

## Apartment - A1 Ground Floor



Usable Surface Area / m<sup>2</sup>

1. Living / Dining	35.0
2. Kitchen	9.6
3. Master Bedroom	20.7
4. Master Toilet	7.1
5. Bedroom 2	13.4
6. Bedroom 2 Toilet	6.3
7. Bedroom 3	12.4
8. Common Toilet	4.3
9. Entrance Verandah	22.6
10. Rear Access/Exit	4.3
11. Private Garden	44.0
12. Plunge Pool	9.2
13. Storeroom	2.0
14. Car Park	30.0

Total Usable Area : 221 m<sup>2</sup>

Total Area : 248 m<sup>2</sup>

# Riviera West

T A M A R I N

Between the Mountain and the Sea

Block B

Block A



Apartment A2

## Apartment - A2 Ground Floor



Usable Surface Area / m<sup>2</sup>

1. Living / Dining	40.2
2. Kitchen	9.6
3. Master Bedroom	20.7
4. Master Toilet	7.1
5. Bedroom 2	14.6
6. Common Toilet	4.2
7. Bedroom 3	15.3
8. Entrance Verandah	24.6
9. Garden	11.0
10. Rear Access/Exit	4.3
11. Storeroom	2.0
12. Car Park	30.0

Total Usable Area : 184 m<sup>2</sup>

Total Area : 207 m<sup>2</sup>

Block B

Block A



Apartment A4

## Apartment - A4 Ground Floor



Usable Surface Area / m<sup>2</sup>

1. Living / Dining	35.0
2. Kitchen	9.6
3. Master Bedroom	20.7
4. Master Toilet	7.1
5. Bedroom 2	13.4
6. Bedroom 2 Toilet	6.3
7. Bedroom 3	12.4
8. Common Toilet	4.3
9. Entrance Verandah	22.6
10. Rear Access/Exit	4.3
11. Plunge Pool	9.2
12. Storeroom	2.0
13. Car Park	30.0

Total Usable Area : 177 m<sup>2</sup>

Total Area : 203 m<sup>2</sup>

# Riviera West

TAMARIN

Between the Mountain and the Sea



Block B

Block A

Apartment A5

## Apartment - A5 First Floor



Usable Surface Area / m<sup>2</sup>

1. Living / Dining	35.0
2. Kitchen	9.6
3. Master Bedroom	20.7
4. Master Toilet	7.1
5. Bedroom 2	13.4
6. Bedroom 2 Toilet	6.3
7. Bedroom 3	12.7
8. Common Toilet	4.3
9. Rear Access/Exit	4.3
10. Balcony 1	12.0
11. Balcony 2	3.8
12. Storeroom	2.0
13. Covered Car Park	13.8

**Total Usable Area : 145 m<sup>2</sup>**

**Total Area : 166 m<sup>2</sup>**

# Riviera West

T A M A R I N

Between the Mountain and the Sea

Block B



Block A



Apartment A9

## Apartment - A9 Second Floor



Usable Surface Area / m<sup>2</sup>

1. Living / Dining	34.5
2. Kitchen	6.0
3. Master Bedroom	17.5
4. Master Toilet	8.0
5. Bedroom 2	13.4
6. Bedroom 2 Toilet	5.4
7. Bedroom 3	12.4
8. Common Toilet	4.3
9. Rear Access/Exit	4.3
10. Balcony 1	12.7
11. Balcony 2	3.8
12. Plunge Pool	9.2
13. Covered Car Park	13.8

**Total Usable Area : 145 m<sup>2</sup>**

**Total Area : 166 m<sup>2</sup>**

# Riviera West

T A M A R I N

Between the Mountain and the Sea

Block B



Apartment B1

Block A

## Apartment - B1 Ground Floor



Usable Surface Area / m<sup>2</sup>

1. Living / Dining	38.5
2. Kitchen	12.1
3. Master Bedroom	20.2
4. Master Toilet	8.4
5. Bedroom 2	13.2
6. Bedroom 2 Toilet	6.2
7. Bedroom 3	12.3
8. Common Toilet	4.3
9. Rear Access/Exit	4.3
10. Balcony	26.0
11. Storeroom	2.0
12. Covered Car Park	13.8

**Total Usable Area : 161 m<sup>2</sup>**

**Total Area : 184 m<sup>2</sup>**

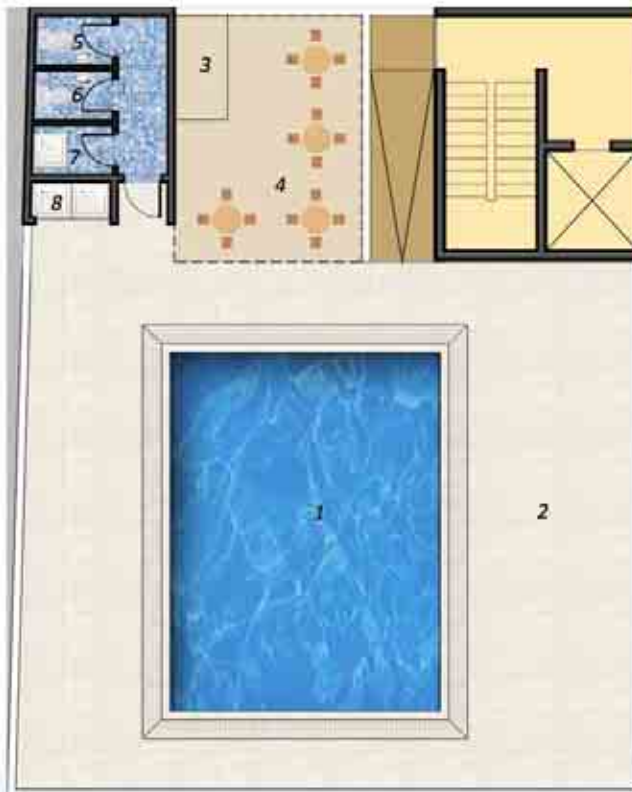
Block B



Block A



## Swimming Pool Ground Floor Block B



1. Swimming Pool
2. Ceramic Tiling Around Pool
3. Barbecue
4. Seating Area
5. Female Toilet
6. Male Toilet
7. Internal Shower
8. External Shower

## Our Interiors

*All units are equipped with:-*

*Homogeneous floor tiles*

*Kitchen furniture with granite worktop and stainless steel sink*

*Kitchen Appliances: Hob, extractor and Oven*

*Concealed electrical wiring*

*Aluminum openings*

*Air conditioned*

*Pre installed phone lines network*

*Central Antenna with pre installed satellite network*



## Interiors

### **Bathrooms & Sanitary fittings: -**

#### *Ensuite bathroom:*

*Vanity top with wash hand basin, granite finish, generally 20mm thick,  
shower cubicle with shower mixer,  
Bathtub and toilet*

#### **Common Bathroom:**

*Vanity top with wash hand basin,  
granite finish, shower cubicle with shower mixer and toilet*



# Riviera West

T A M A R I N

Between the Mountain and the Sea

## Exterior

**Common Swimming Pool – 48m<sup>2</sup>**

**Open Pool/Sun Tiled Deck**

**Grilling Area**

**Ladies' and men's toilet**

**Indoor and outdoor Shower**

**CCTV surveillance cameras systems in common areas**

